

### CAPUCHA SU1087



#### DESCRIPTION

Sweat com capuz com bolso canguru e cordão ajustável. Punhos e cintura de ponto canalê/canelado 1x1 com elastano. Modelo de criança sem cordão.

#### COMPOSITION

50% algodão / 50% poliéster, pelúcia cardada , 280 g/m<sup>2</sup>

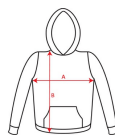
#### REMARKS

\*Cor cinza vigoré 58: 55% algodão / 40% poliéster/ 5% viscosa. \*Etiqueta removível. \*Pelúcia cardada. \* \*Tratamento Roly. \*Tamanhos infantis.

#### SIZES

Adults:: S · M · L · XL · XXL · XXXL / Kids:: 3/4 AÑOS · 5/6 AÑOS · 7/8 AÑOS · 9/10 AÑOS · 11/12 AÑOS

#### SCHEME



#### QUANTITIES

	Box	Pack
<b>Kids:</b>	30 un.	1 un.

#### COLORS



#### SIZES

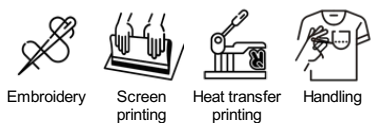
Adults:	S	M	L	XL	XXL	XXXL
WIDTH (A)	54cm	57cm	60cm	63cm	66cm	69cm
HEIGHT (B)	64cm	67cm	70cm	73cm	76cm	79cm

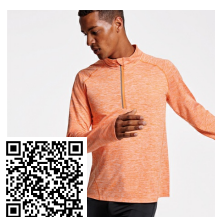
Kids:	3/4 AÑOS	5/6 AÑOS	7/8 AÑOS	9/10 AÑOS	11/12 AÑOS
WIDTH (A)	36cm	40cm	44cm	46cm	49cm
HEIGHT (B)	44cm	48cm	52cm	56cm	60cm

\*[Measured from the edge 1 cm below the sleeves / Measured from the highest point of the shoulder to the end of the garment]

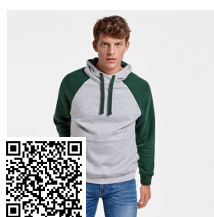
#### PRINTING TECHNIQUES AVAILABLE



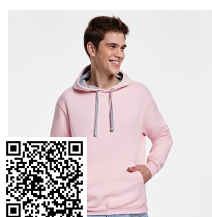
#### RELATED MODELS



MELBOURNE CA1113



BADET SU1058



URBAN SU1067



URBAN WOMAN SU1068